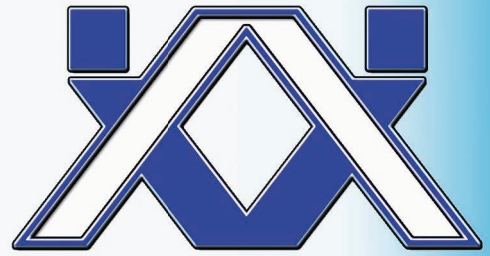
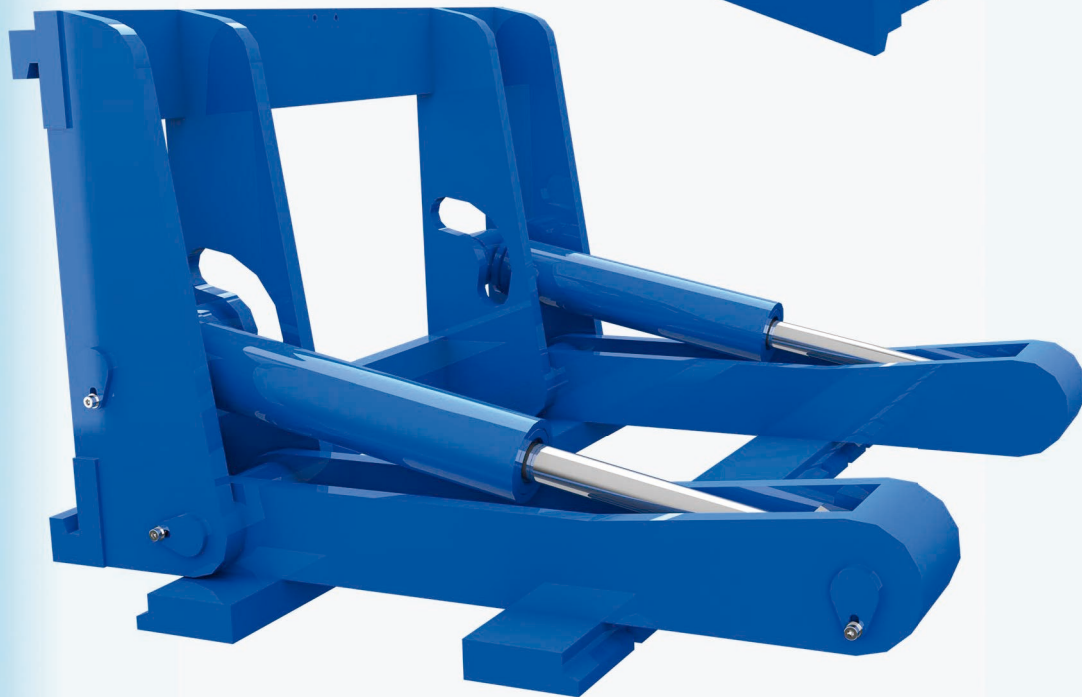
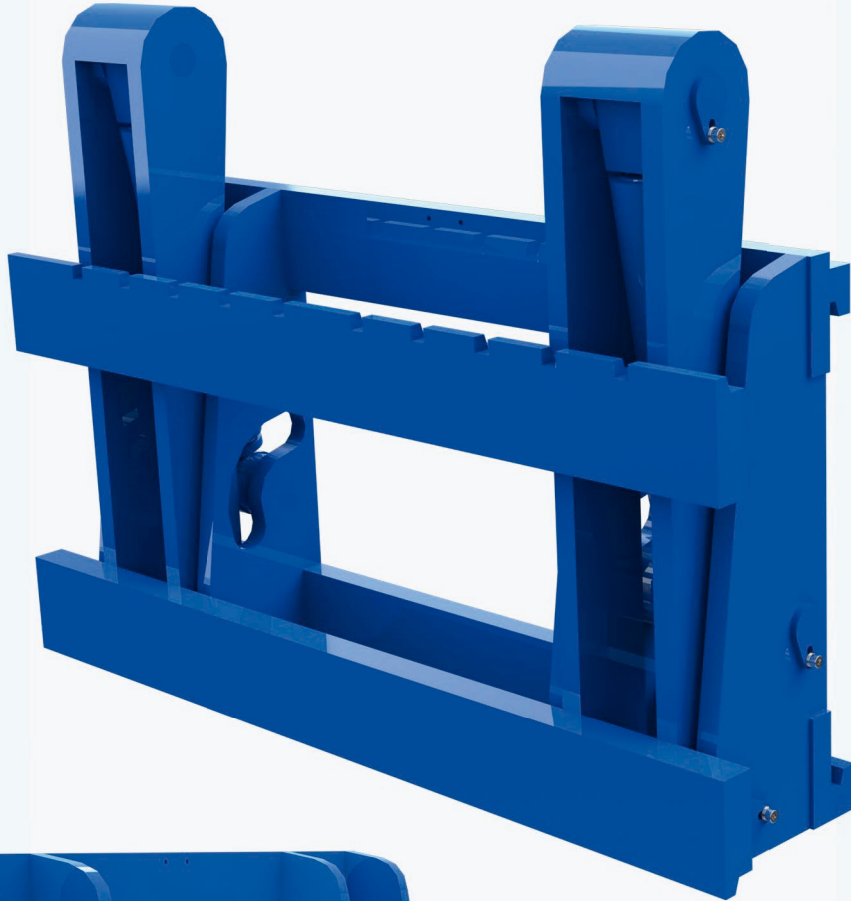


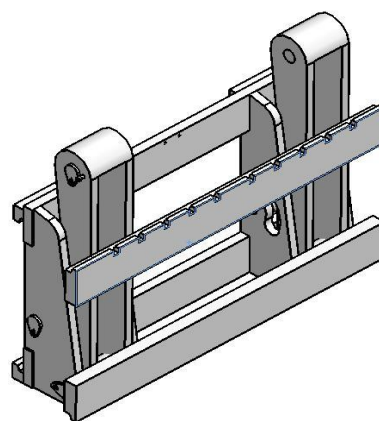
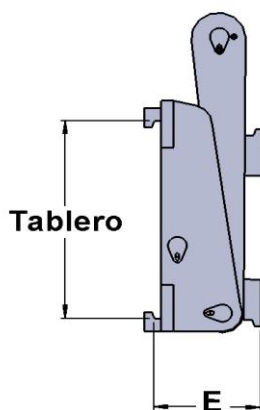
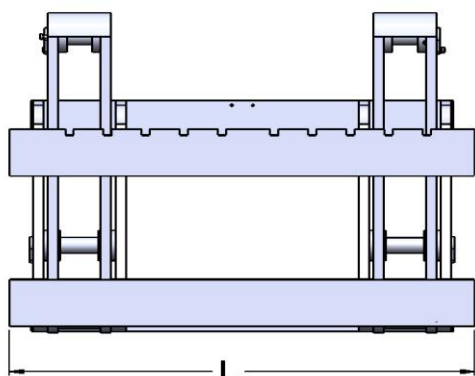
# ACMAN AUTRANS



**Volteador 90° frontal con placa portahorquillas.**

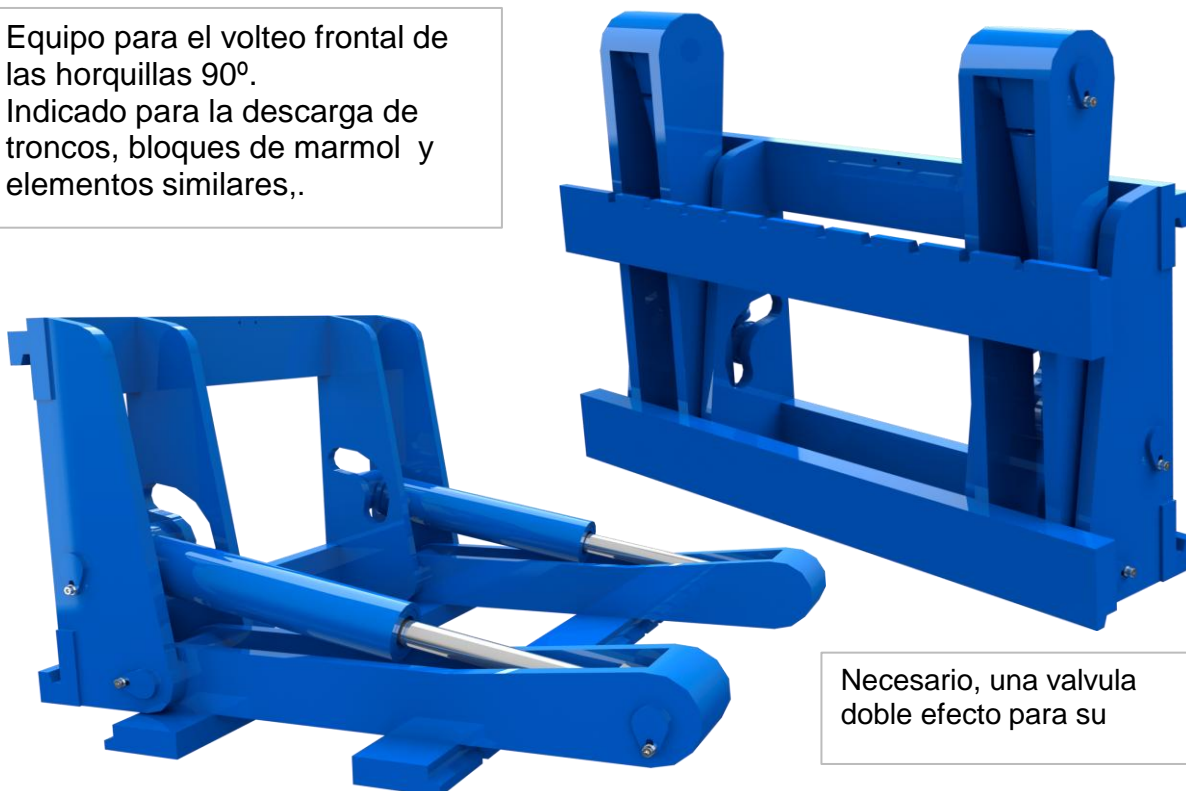


**[www.acman.net](http://www.acman.net)  
[comercial@acman.net](mailto:comercial@acman.net)  
tlf. 93 847 1849 fax. 93 847 1848**



| Modelo | Tablero | Capacidad | Giro | B    | A   | peso | c.d.g. | P.V.P. |
|--------|---------|-----------|------|------|-----|------|--------|--------|
|        | FEM     | Kg/mm.    |      |      |     | Kg.  | mm.    | €      |
| 10 VF  | II      | 1000-500  | 90°  | 1100 | 210 | 215  | 78     | 4.996  |
| 20 VF  | II      | 2000-500  | 90°  | 1100 | 210 | 230  | 78     | 6.538  |
| 40 VF  | III     | 4000-500  | 90°  | 1100 | 240 | 350  | 118    | 7.691  |

Equipo para el volteo frontal de las horquillas 90°. Indicado para la descarga de troncos, bloques de marmol y elementos similares,.



Necesario, una valvula doble efecto para su